



THE FUTURE OF JOINT PRESERVATION

The OvertureTi Knee Resurfacing System

- Preserves healthy, native articular cartilage
- Cost effective option vs biologic repair
- Single-stage surgery
- Simple and reproducible technique
- Minimal bone removal
- Solid fixation

Product Overview

The **OvertureTi Knee Resurfacing System** is composed of femoral and tibial implants that are intended to be used in the partial replacement of the articular surfaces of the knee.* These implants are designed with sizing options that allow the surgeon to replace only the diseased or damaged region of the joint while preserving healthy surrounding cartilage and meniscus. We refer to this technique of replacing only the affected areas and preserving healthy tissue as Focalplasty™.



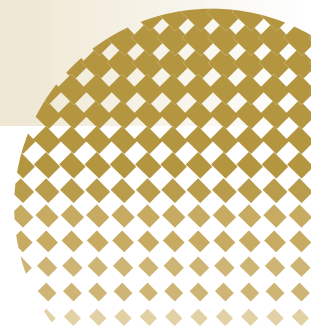
Design Rationale

The **OvertureTi Knee Resurfacing System** femoral and tibial baseplates are 3D printed, porous titanium. The femoral components have a titanium nitride articulating surface and the tibial components have an overmolded polyethylene articulating surface. These implants are smaller than traditional total or partial knee prostheses and are designed to treat distinct articular lesions. Using this focused replacement technique, or Focalplasty™, surgeons can replace diseased areas in a very targeted fashion, while preserving the surrounding healthy, native cartilage.

Why the Overture Knee Resurfacing System is the Better Option

- Younger, active patients with focalized, chondral lesions prefer a joint preserving option vs partial or total knee replacement
- Biological surgical options are expensive and inconsistent¹
- Simplified, single stage surgery.

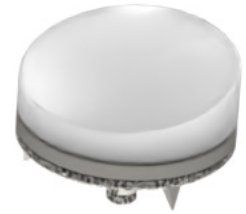
¹Nahas, S., Obaidi, B., Shearman, A., Hodgson, H., Nathwani, D., (2019). Focal knee resurfacing. *Orthopaedics and Trauma*, 33(2), 133-139.
*See the IFU at www.overtureortho.com for a complete indications statement.



IMPLANTS

TIBIAL

90-OVR-300017	17.5 MM
90-OVR-300020	20.0 MM
90-OVR-300022	22.5 MM



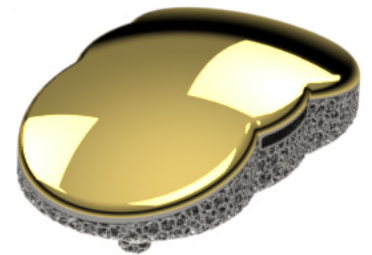
FEMORAL - ROUND

90-OVR-200017	17.5 MM
90-OVR-200022	22.5 MM
90-OVR-200025	25.0 MM



FEMORAL - OBLONG

90-OVR-101730	17.5 X 30.0 MM
90-OVR-102035	20.0 X 35.0 MM
90-OVR-102240	22.5 X 40.0 MM



The OvertureTi Knee Resurfacing System bridges the care gap for patients with focalized chondral lesions of the knee

